

POULTRY EQUIPMENT

Product Catalogue



SISTEMTAV
POULTRY EQUIPMENT



About Us

We have been operating in the field of poultry equipment with our 20 years of poultry sector experience and knowledge.

For the needs of the whole poultry sector; feeding, irrigation, heating, ventilation, cooling, lighting, feed silos, feed transport systems, egg cages and computerized control systems. Thanks to our qualified and experienced technical staff, it continues to be with you at every step of the project starting from the project stage.

Our poultry equipment, domestic and abroad; products are preferred with diversity, quality and technical team, sales and after-sales services.

Our aim is to create useful and lasting values for our customers with our reasonable price policy by combining quality materials with quality workmanship. Our young dynamic staff, innovation curiosity and technical research skills have enabled us to gain the trust of all our customers.

System equipment sets, honest, hardworking and when operating without compromising quality production of experienced staff, the quality of all opportunities for the poultry industry, for example, and leaders in Turkey, is a recognized brand in the world.

Mission

- Continuously creating new values for our customers, employees, partners and society,
- Honest employee in compliance with laws and business ethics,
- Use resources efficiently,
- Offering quality products, reliable and constantly developing,
- Developing talents, encouraging participation and teamwork in a good working environment, value its employees,
- High social responsibility and environmental awareness,
- Developing and developing with the aim of cooperation with suppliers,
- Adopting modern woolen techniques,
- We want to be perceived in the poultry sector as a competitive company that creates sustainable profitable growth.

Vision

As Sistemtav, our aim is to provide the Turkish manufacturer with the latest technology in Europe and the world, to make it more profitable production, thereby increasing the competitiveness of the Turkish manufacturer in the domestic and foreign markets.

To become a permanent brand in poultry equipment systems in the world.



CONTENTS

Broiler Automatic Feeding Systems	2
Manuel Feeding Products	3
Nipple Drinking System	4
Drinking System	8
Ventilation Cooling Systems	10
Ventilation Cooling Systems	11
Exhaust Fans	12
Exhaust Fans	13
Ventilation Cooling Systems	14
Poultry Control Computer	15
Feed Weighing Systems	16
Silo and Feed Transporting Systems	17
Rooster Feeding Systems	18
Automatic & Manuel Nests	19
Breeder Chain Feeding Systems	20
Breeder Chain Feeding Systems	21
Poultry House Lighting Computer	22
Incubator Equipments	23
Heating Systems	24
Accessories	25
Life Chicken Transporting Coops	28
Meat Boxes	29

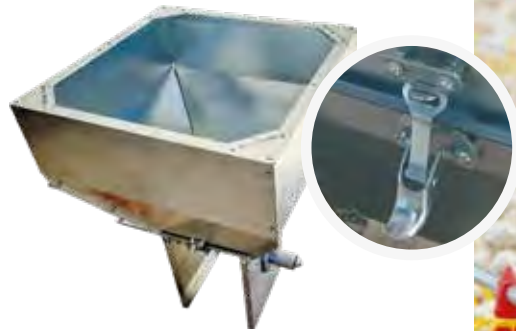
Automatic Feeding Systems



0.55 - 0.75 kwh

BRL-01

Feeding Hoopers Motor



BRL-02

Feeding Hooper



BRL-04

Pan Feeder



BRL-05

Pan Feeder With Feed Stop



BRL-06

Pan Feeder



Lenght **300 mm**

Ø **45 x 1.2 mm**

BRL-07

Galvanized Feed Pipe



BRL-08

Limit Switch End Line



BRL-09

Feeding Stop Switch



Lenght **300 mm**

Ø **45 x 1.2 mm**

BRL-10

Galvanized Feed Pipe



38 mm

BRL-11

Spiral



BRL-12

Feeding Pipe Clamp

Manuel Feeding Products



MF-01

Bucket Type Mini Feeder

100
Chickens



MF-02

Tray Type Chick Feeder



MF-03

Feeder Stand



20 kg

MF-04

Suspended Feeder



15 kg

MF-05

Suspended Feeder



10 kg

MF-06

Feeder



5 kg

MF-07

Feeder



3 kg

MF-08

Feeder



1 kg

MF-09

Feeder

Nipple Drinking Systems



NDS-01

Bypass Pressure Regulator



NDS-02

Sys Max Regulator



NDS-03

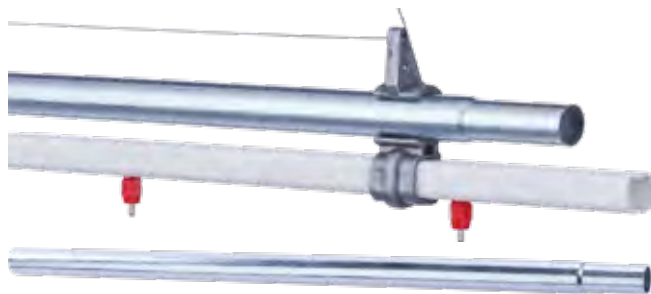
End-Line Set **Assembly**



NDS-04

Regulator

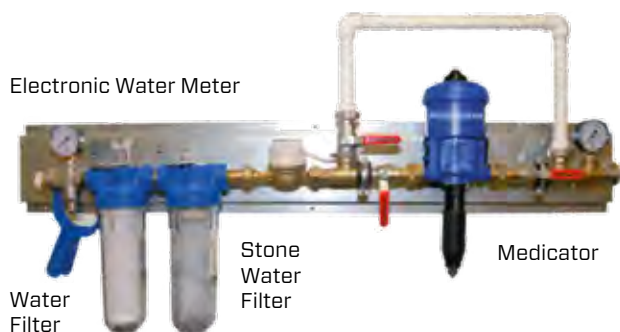
Nipple Drinking Systems



Ø 20x27.2 mm

NDS-07

Galvanized Pipe



NDS-08

Water Cleaning & Medicating System



NDS-09

Medicator



NDS-10

Water Filter



NDS-11

Stone Water Filter



NDS-12

Electronic Water Meter

Nipple Drinking Systems



- Features:**
- Plastic body
 - Used for layers
 - Stainless steel inside
 - 70 milliliters per minute
 - 180 degrees

N-01

Plastic Layer Nipple



- Features:**
- Plastic body
 - Used for broilers
 - Stainless steel inside
 - 70 milliliters per minute
 - 360 degrees

N-02

Plastic Broiler Nipple



- Features:**
- Main body is made of steel
 - Specially designed for layer chickens.
 - It is mounted by screwing the body.
 - Inside of body is made of stainless steel.
 - 70 milliliters per minute

N-03

Stain Layer Nipple



- Features:**
- Complete steel
 - Used for broilers
 - Stainless steel inside
 - 80 milliliters per minute
 - 360 degrees

N-04

Stainless Broiler Nipple



- Features:**
- Plastic and steel body
 - Used for all birds
 - Stainless steel inside
 - 80 milliliters per minute
 - 360 degrees

N-05

Round Pipe Nipple with Clamp



- Features:**
- Plastic and steel body
 - Used for all birds
 - Stainless steel inside
 - 80 milliliters per minute
 - 360 degrees

N-06

Square Pipe Nipple with Clamp



- Features:**
- Steel body with rubber gasket
 - Used for layers
 - Stainless steel inside
 - 70 milliliters per minute

N-07

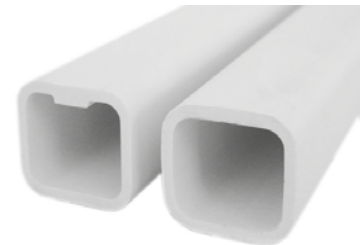
Inox Nipple with Gasket



- Features:**
- Plastic body
 - Used for broilers, breeders
 - Stainless steel inside
 - 60 milliliters per minute
 - 360 degrees

N-08

Chubby Nipple with Ball



- 22x22 mm

N-09

Plastic Square Pipe



Used with square pipes, helps to install the nipple and remove it without damaging the pipe.

N-10

Nipple Slot for Square Pipe



Used with round pipes, helps to install the nipple and remove it without damaging the pipe.

N-11

Nipple Slot for Round Pipe



- 27 mm

N-12

Plastic Round Pipe

Nipple Drinking Systems



N-13

Water Level Hose Set



N-14

Plastic Tap With End-Line



N-15

Flush Tap



N-16

Square - Circular Reduction



N-17

Diaphragm Set



N-18

PVC Connected Part



N-20

Nipple Pipe Hanger



N-21

Square Pipe Hose Entrance



N-22

Nipple Pipe Hanger



N-23

U Type Nipple Holder



26.7 mm

N-24

Square Pipe End Line Plastic



N-25

Electrical Shocker



N-26

Square Pipe Plastic Connector



N-27

Round Pipe Plastic Connector



N-28

Spiral Hose For Line Watering

Drinking Systems

Capacity
50 Chicks



MD-01

3 LT Drinker

Capacity
100 Chicks



MD-02

6 LT Drinker



N-35

Disp Cup



MD-04

Drinker Stand



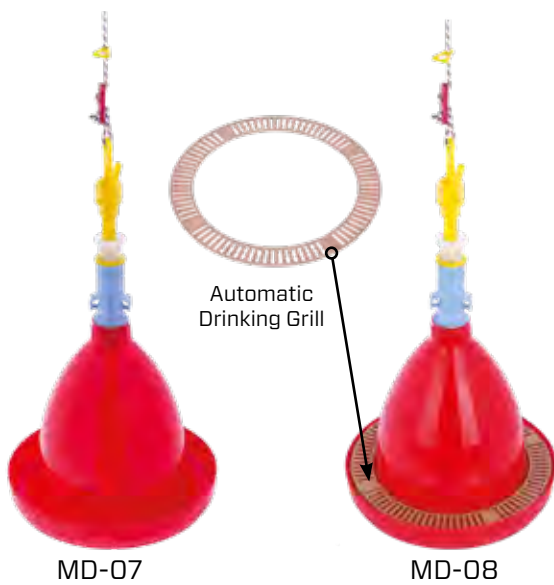
MD-05

Water Bowl



MD-06

Automatic Chick Drinker



MD-07

MD-08

Automatic Drinking Grill

MD-07 / MD-08

Automatic Drinking Pot

Pope 01
Hose Holder 02
Pope Adjustment Plastic 03
Water Pipe 04

Water Level Adjustment Screw 05
Water Level Adjustment Nut 06

Adjustment Screw Spring 07

Body of the Mechanism 08

Valve Spiring 09

Valve Pin 10

Valve Pin Gasket 11

Valve Gasket 12

Valve 13

MD-09

Automatic Drinker Mechanism

Nipple Drinking Systems



N-29

Setting Clips



∅ 21.3 mm

N-30

"S" Pipe Attach



∅ 26.7 mm

N-31

"S" Pipe Attach



∅ 30 mm

N-32

"S" Pipe Attach



∅ 32 mm

N-33

"S" Pipe Attach



N-34

Nipple Drip Cup With Hanger



N-41

Nipple Cup Round Pipe



N-36

Single Dripcup



N-37

Square Cup



N-38

Dual Dripcup



N-39

Dual Dripcup



N-40

Dripcup

PVC Cooling Pad Systems



SYS-01

SYS PVC Cooling Pad System



- Easy installation
- Includes an internal water tank, no need for an additional one
- The Floating system enables automatic refill when the water level falls
- Adjustable length and height due to its modular structure
- The pads can be easily installed and uninstalled due to the special lock system
- Includes a drain valve
- PVC materials contain UV
- More durable than alternative cooling systems as it completely made of plastic
- Completely rustproof

SYS-02

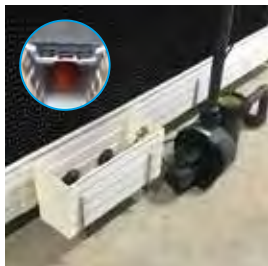
Pump Unit With Self Filter



Endcover for Deflector



Floating System



Top Bracket

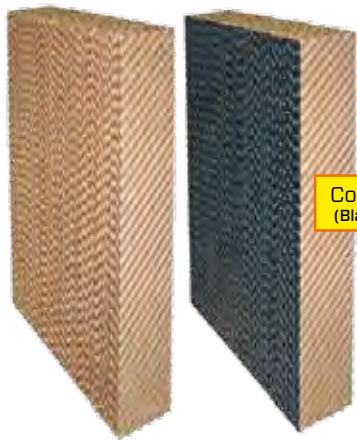
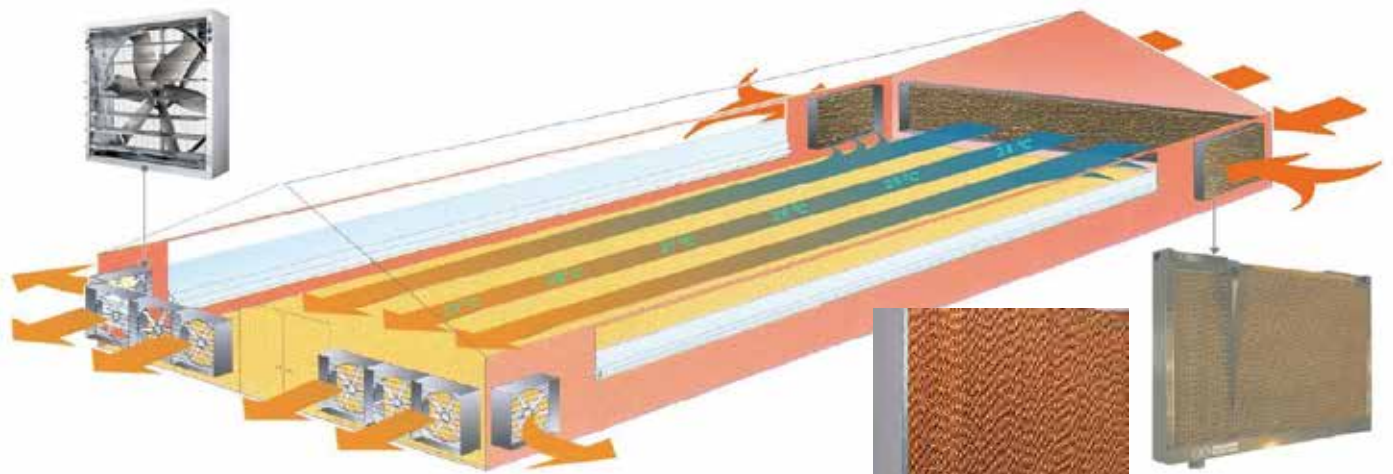


Sprinkling



Watergutter





**Cooling Pad
(Black Coated)**

Cooling Pad Dimensions

100x60x10 cm	100x60x15 cm
120x60x10 cm	120x60x15 cm
150x60x10 cm	150x60x15 cm
180x60x10 cm	180x60x15 cm
200x60x10 cm	200x60x15 cm



SYS-03

Evaporative Cooling System

SYS-04

Galvanize Cooling Pad System

PVC Tunnel Door System



SYS-05

Cooling Pad Window System

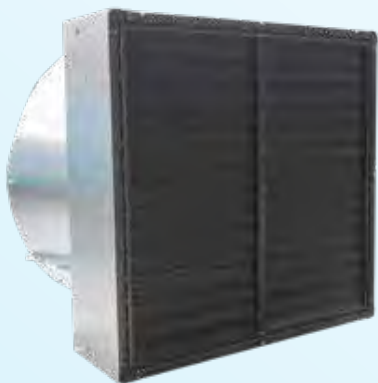


24 Volt

SYS-06

Window and Air Inlet Motor Activator

Exhaust Fan Shutters



PLASTIC SHUTTER FAN

- Made of plastic louvers with long life
- Instead of centrifugal system, opening with air power
- Less maintenance cost
- Easy cleaning feature



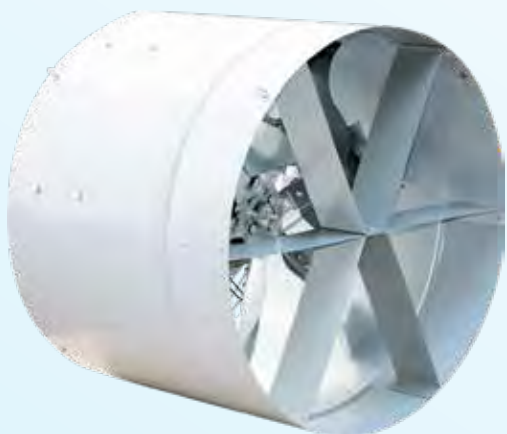
SYS PVC Plastic Shutter Fan



- Ready-to-install with no assembly required
- Shutter sizes to fit all your fans.
- PVC shutters are extremely affordable, durable, lightweight and open easily for minimal airflow resistance
- PVC shutters offer a visually attractive appearance and are corrosion resistant.
- Heavy duty 'SW' PVC shutters can be manual operated.



SYS PVC Plastic Shutter Fan



- High airflow and high efficiency
- Low power consumption, results in lower energy cost
- Direct drive system
- Improves indoor air quality by preventing air stratification and condensation
- Fast and easy installation
- The new SYS18HE and SYS24HE fans belong to the new generation of high energy efficient, very robust and reliable air blower fan range, suitable for an extensive variety of professional applications in order to create the optimal indoor climate.

MODEL	DIMENSIONS	WEIGHT	MOTORPOWER	CAPACITY
SYS18	65x65x55 cm	18 kg	0,33 hp	5.046 m³/h
SYS24	80x80x55 cm	24 kg	0,50 hp	10.087 m³/h

SYS18/24 Exhaust Fan

Exhaust Fans



- Fan housing and venturi made of the corrosion resistant material Munters Protect
- Central hub and v-belt pulley are made from die-cast aluminium, with reinforced ribs for prolonged lifetime
- Reduced stress on motor bearings
- Welded wire guards designed for easy maintenance fitted with noise reduction supports
- Patented centrifugal system permits an energy efficient solution
- Shutter bearings are maintenance free

DIMENSIONS	WEIGHT	MOTORPOWER	CAPACITY	
			0 Pa	25 Pa
138x138x53 cm	86 kg	1.50 hp	42.125 m ³ /h	38.048 m ³ /h

SYS50 Exhaust Fan



- Direct drive system
- Fan housing and Venturi made of strong galvanised sheet-steel
- Shutters are made of pressed galvanised steel in order to ensure highest strength
- Low power consumption
- High airflow capacity with excellent energy efficiency
- The shutter blades are installed on the outlet side, and the whole shutter system is driven by the patented shutter-opening device, that is operated by the propeller rotation.

DIMENSIONS	WEIGHT	MOTORPOWER	CAPACITY	
			0 Pa	25 Pa
95x95x52 cm	60 kg	0.50 hp	14.146 m ³ /h	12.663 m ³ /h

SYS30 Exhaust Fan



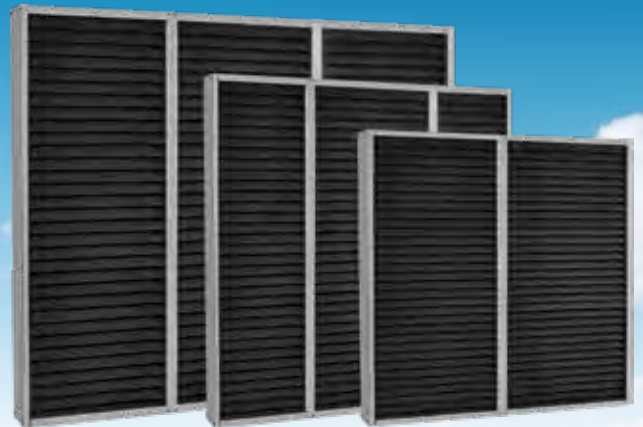
- Fan housing, cone and venturi made of strong galvanised sheet-steel
- Central hub and v-belt pulley are made from die-cast aluminium
- Optional belt-tensioner available for increased v-belt lifetime and reduced maintenance
- 3-blade propeller is statically and dynamically balanced
- Shutter is opened by rotating weights placed over centrifugal system arms
- A powerful couple of springs keep the shutters firmly closed when the fan is not operating

DIMENSIONS	WEIGHT	MOTORPOWER	CAPACITY	
			0 Pa	25 Pa
142x142x129 cm	112 kg	2.00 hp	49.500 m ³ /h	44.700 m ³ /h

SYS52 Exhaust Fan

Ventilation Systems

- Can be manufactured at any dimensions.
- Used for Exhaust Fans, Minimum Fans, Chimney Fans, Flap and Hoods.
- Stops light from entering the poultry house from the ventilation system components.
- Ensures an environment of total darkness in the poultry house.
- Easy to mount.
- Contains plastic blades in a durable galvanised frame.



Code	Dimensions
VD-01	140 x 140 x 11.5 cm
VD-02	100 x 100 x 11.5 cm



VD-01 / VD-02

Light Traps



VS-01

Air Inlet Storm Hood



Dimension 535x235 mm

VS-02

Air Inlet



Dimension 805x238 mm

VS-03

Air Inlet



VS-04

Air Inlet



VS-05

Air Inlet



VS-06

Air Inlet Control Board

Air Inlet

- Between 0-40 pascal, 1400-3000 m³/hour
- It is made of original ABS material. It is itself an insulation material due to its nature.
- Clacks are controlled by a central system by means of a manual or an engine-driven crane.

Advantages

- High level insulation
- Robust and light material
- Easy assembly
- Control of air flow direction
- Resistant against chemical and acidic medium

Capacity	10Pa	20Pa	40Pa
	1350	1960	2900

Poultry Control Computer



SYS-07

- Easy operation with color touch screen
- Minimum ventilation depending on the number of animals, fan capacity, daily requirement with daily program
- External temperature, humidity-dependent ventilation
- 3 different ventilation index (Minimum, Transition, Tunnel)
- 2 different season index (Summer, Winter)
- Speed controlled minimum or tunnel ventilation
- Recording of historical failures with reporting
- Recording the operating time of the historical heat and humidity heater
- Controlling the pump according to temperature, outdoor temperature, humidity and time
- Proportional curtain control as required
- Ventilation according to the average of sensor 1, sensor 2, sensor 3, sensor 4 or all
- 2 different lighting program outputs
- Easy setup with user-specific parameter recording
- Ability to send messages to mobile phone
- Remote computer connection with internet tracking and information update feature



SYS-08

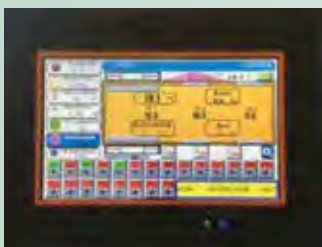
Sensor Inputs

- 4 internal temperature sensors
- 1 outdoor temperature sensor
- 1 humidity sensor
- 1 pressure sensor
- 1 ammonia sensor

Control Outputs

- 12 pcs fan outlet fans can be selected minimum ventilation outlet or tunnel ventilation
- 0..10v Speed adjustable fan control output
- Heater output
- 2-stage pad pump output
- Flap control output
- Curtain control
- 2 lighting output
- Alarm output

- Alarm Types
- High temperature
- Low temperature
- High humidity
- Low humidity
- High pressure
- Low pressure
- Electricity was cut
- Sensor 1 malfunction
- Sensor 2 malfunction
- Sensor 3 malfunction
- Sensor 4 malfunction
- External temperature sensor malfunction
- Humidity sensor malfunction
- Pressure sensor malfunction
- Fault input from 4 separate panels



SYS-9

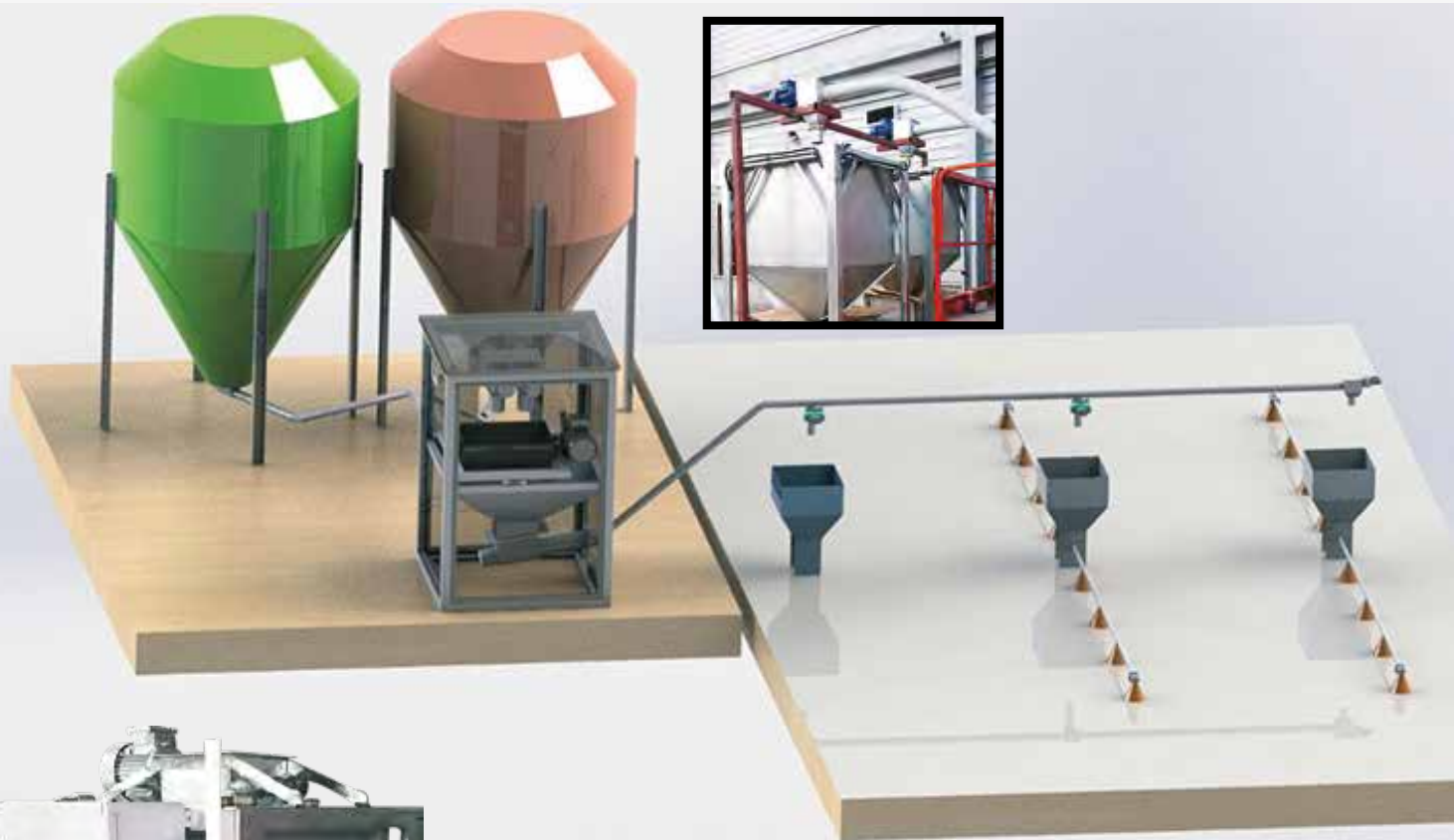
- 7 "Touch screen
- 3 Pieces internal sensor
- 1 Piece of external sensor
- 1 Piece roof intermediate sensor
- 1 Piece co2 sensor
- 1 Piece moisture sensor
- 20 Control to fans
- Remote access
- Regional or average heating
- Timing and pressure usage flaps
- Optimum and soft transitive air conditioning control
- 45 Day package programs and selectable changes
- Lamp control
- Feed control



SYS-10

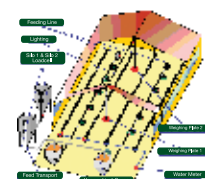
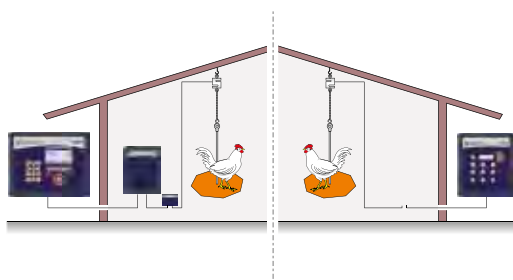
- 12 "Touch wide screen
- 6 Pieces internal sensor
- 1 Piece of external sensor
- 1 Piece roof intermediate sensor
- 1 Piece co2 sensor
- 1 Piece moisture sensor
- 1 Piece air quality sensor
- Pad and pad cover control
- Water report and recording system
- 24 Control to fans
- Remote access
- Regional or average heating
- Timing and pressure usage flaps
- Optimum soft transitive air conditioning control
- 45 Day package programs and selectable changes
- Lamp control
- Feed control
- Reporting and graphics

Feed Weighing Systems



- Automatic tank weighing system.
- Tank capacity 350-400kg. Can be optionally increased.
- The bait is weighed at the top, then transferred to the bottom win with the automatic bottom cover.
- Feed bottom depot is transported to the desired place.
- Precise weighing range
- Easy transport saving time and workmanship done by feeding properly.
- Easy to use and language options.
- Graphical display showing system flow and weighing
- Economical model with double outlet for twin and side buildings.
- Transport feed can be up to 14 stations.

Bird Weighing System

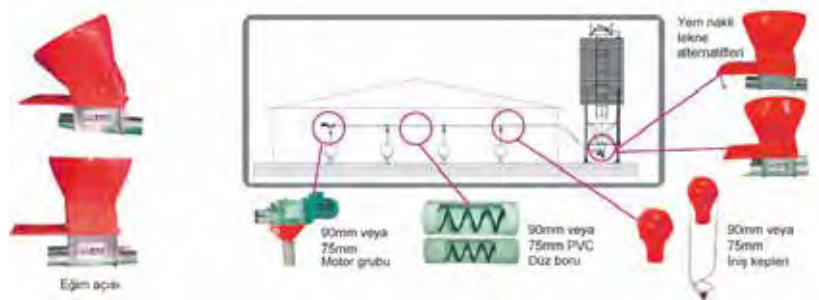


Silo and Feed Transporting Systems



Galvaniz Yem Siloları, Silikonlu ve Hava Tahliyeli

Code	Diameter	Height	Capacity	Capacity	Legs
SFL-01	Ø 2.10 m	5.20 m	5.000 kg	8 m ³	4
SFL-02	Ø 2.10 m	5.20 m	7.000 kg	11 m ³	4
SFL-03	Ø 2.10 m	6.00 m	9.000 kg	14 m ³	4
SFL-04	Ø 2.65 m	5.50 m	11.000 kg	17 m ³	6
SFL-05	Ø 2.65 m	6.30 m	14.000 kg	22 m ³	6
SFL-06	Ø 2.65 m	7.20 m	18.000 kg	28 m ³	6
SFL-07	Ø 2.65 m	8.00 m	21.000 kg	33 m ³	6
SFL-08	Ø 2.90 m	8.85 m	25.000 kg	39 m ³	6



Silo Loadcell Weighing System

SF-01 / SF-02

?



SF-03

Double Outlet Boot



SF-04

Single Outlet Boot



SF-05

Silo Feed Loader



SF-06

Feed Transport Motor Unit



90 mm

SF-07

Feed Transport Pipe



Stainless Steel

75 mm

SF-08

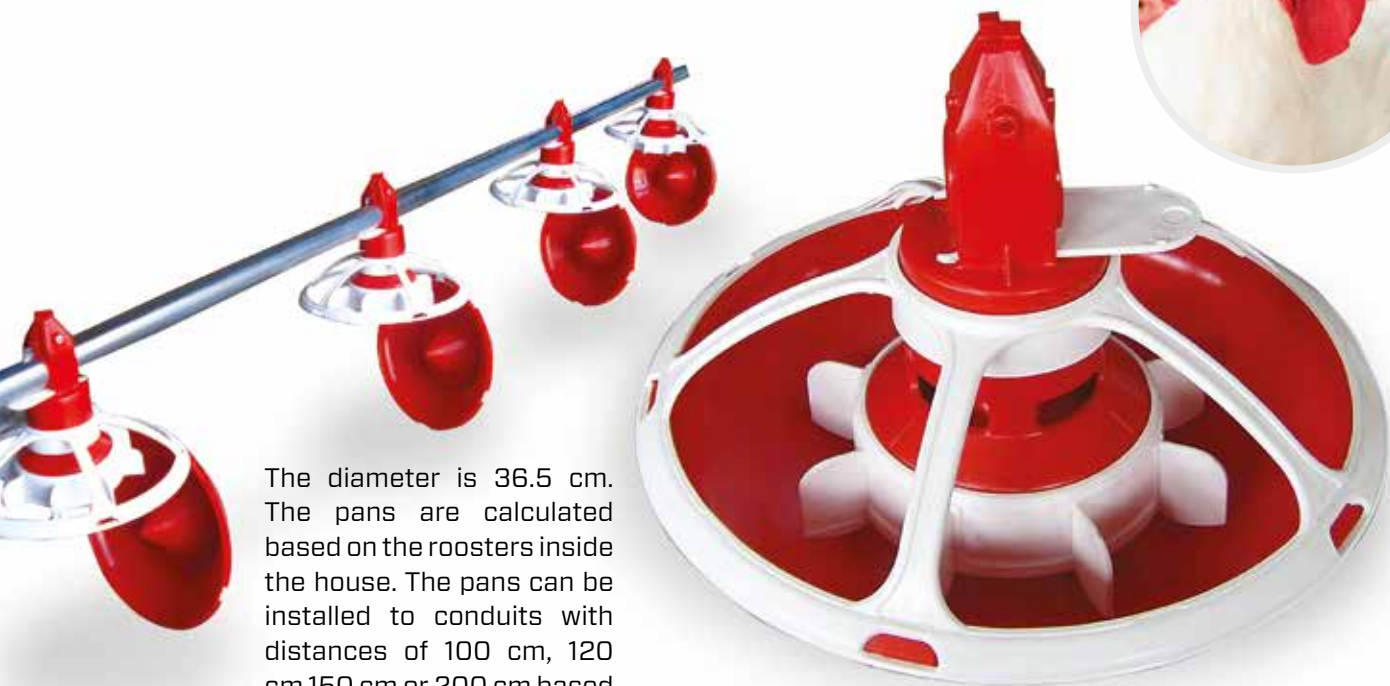
Main Spiral Auger



SF-10

Feed Distribution Strait

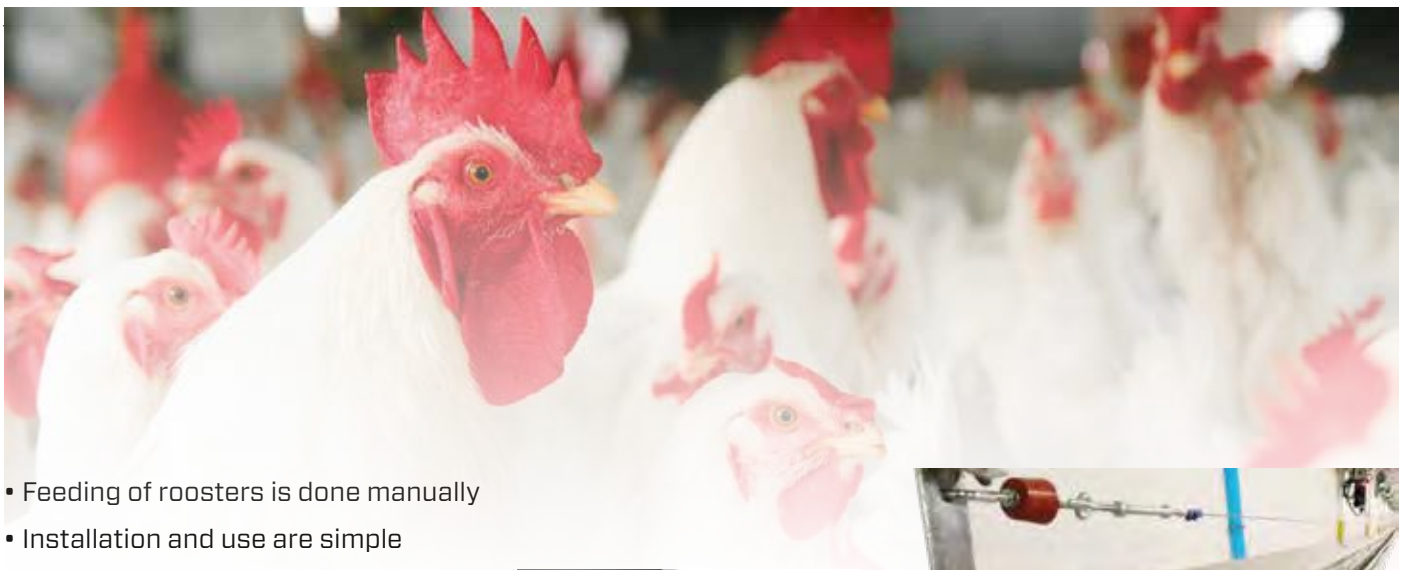
Male Feeding Systems



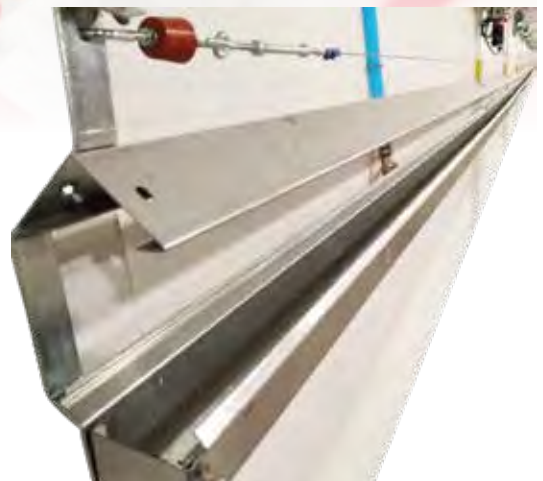
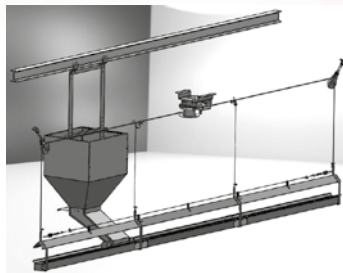
The diameter is 36.5 cm. The pans are calculated based on the roosters inside the house. The pans can be installed to conduits with distances of 100 cm, 120 cm, 150 cm or 200 cm based on the number of roosters.

MFS-01

SYS Ross



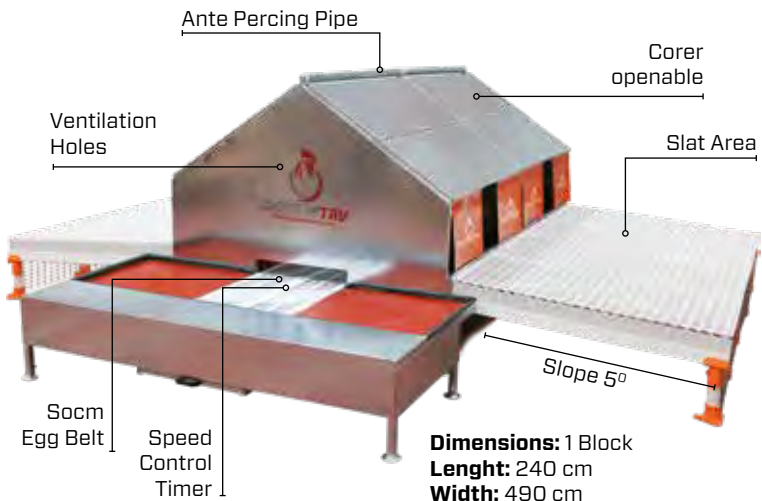
- Feeding of roosters is done manually
- Installation and use are simple
- The system is lifted above and lowered using a crane, allowing the roosters to reach the same food at the same time.
- It can be produced in the most suitable form and size up to 3 meters long.
- 1.2 mm galvanized sheet with high corrosion resistance is used.
- It provides a straight line by combining the feed channel and rooster line cap.



MFS-02

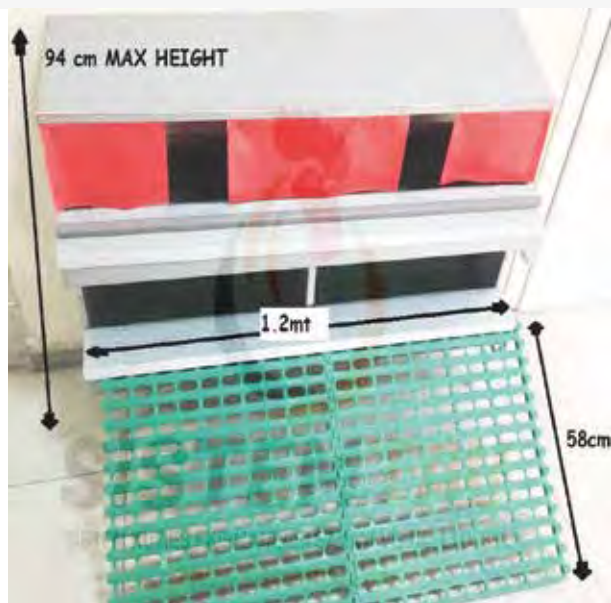
Manual Rooster Feeding

Automatic & Manuel Nests



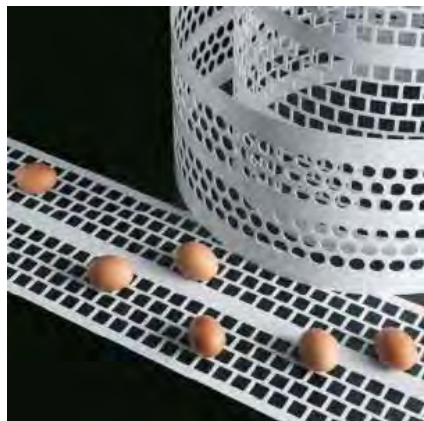
SMN-01

Egg Collection Center (Automatic Nest)



SMN-02

Manuel Nest



With: 250 mm
Thic: 1.5 mm **With: 500 mm**
Thic: 1.5 mm

AN-02

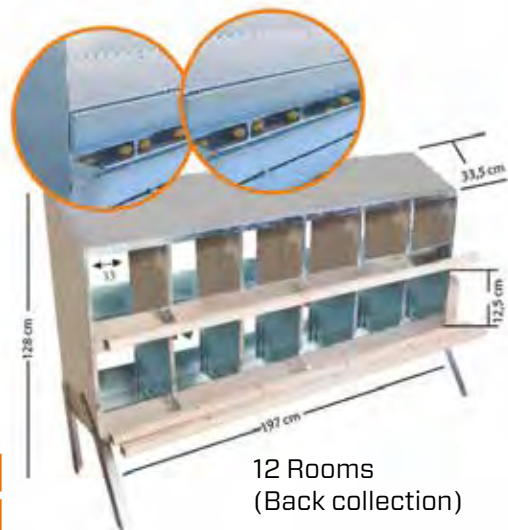
Automatic Nest Egg Transport Belt



3.7 kg
120 x 60 cm

AN-01

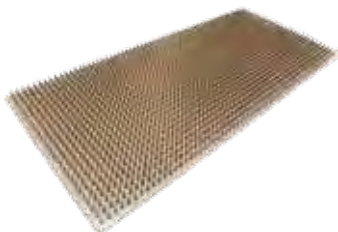
Breeder Slat



12 Rooms
(Back collection)

MN-01

Manuel Nest



50 x 30 cm

SN-01

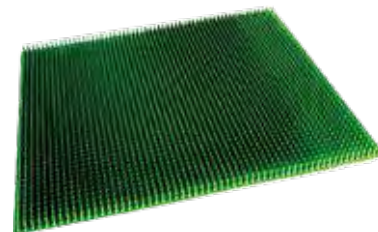
Rubber Nestpad



40 x 30 cm

SN-02

Plastic Nestpad

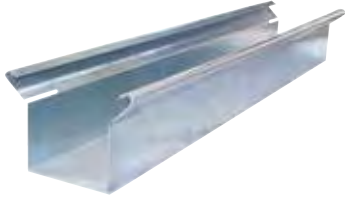


57 x 47 cm

SN-03

Rubber Nestpad

Chain Feeding Systems



Feeding Trough

SCF-01

Rearing Trough



Feeding Trough

SCF-02

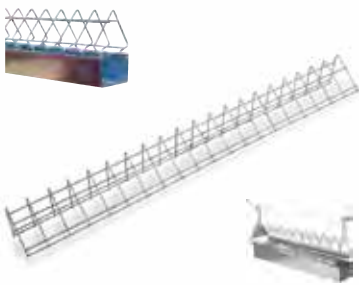
Broiler Trough



Coupler

SCF-09

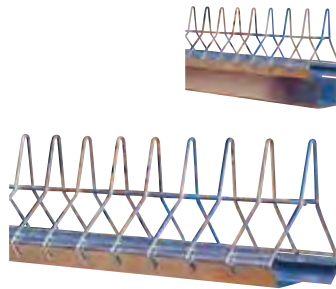
Suspended Channel Bridge



Male Exclusion Grill

SCF-04

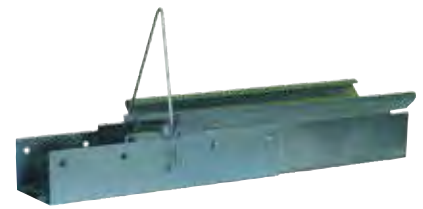
Standard Channel Grill



Male Exclusion Grill

SCF-07

High Profile Grill



Suspended Coupler

SCF-08

Suspended Channel Bridge



SCF-19

Chain Feeding Corner Trough Leg



SCF-20

Chain Feeding Trough Leg



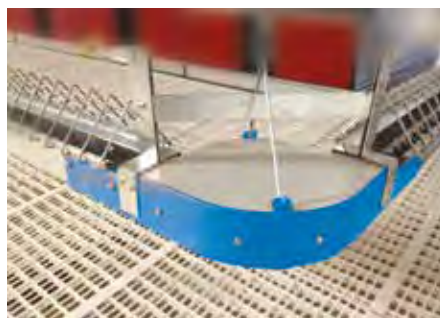
SCF-18

Motor Gear



SCF-10

Feeder Chain



SCF-11

Suspended Corner



SCF-12

Chain Feeding Corner

Chain Feeding Systems



SCF-13

Chain Stretching Winch



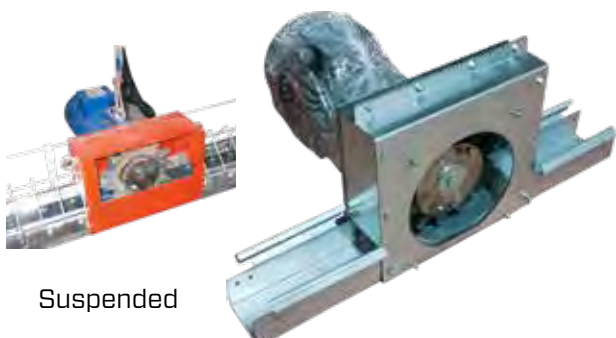
SCF-14

Feed Hopper



SCF-15

Chain Feeding Cleaner



Suspended

SCF-16

Chain Feeding Motor Drive Unit



On Floor

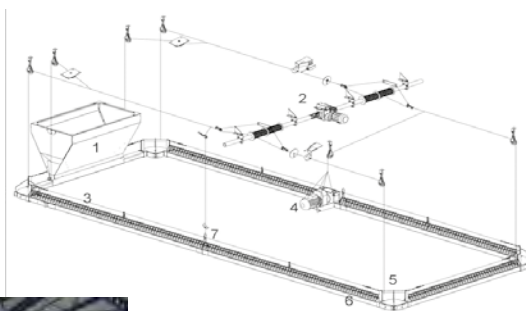
**1.1 - 2.2 kw
62-80 Cycle TRP**

SCF-17

Chain Feeding Motor Drive Unit



Legged Feeding System



Suspended Model Chain Feeding System

Poultry House Lighting Systems



8 w

- Water Proof
- 3.000 K
- IP 67
- No Break
- 900 Lumens
- Warmwhite Dimmerable

PLS-01

LED Lamp



806 lm

9 w

PLS-02

LED Lamp



2 x 2.5

PLS-03

Electric Cable



PLS-04

Light Holder



PLS-05

Lighting Board With Dimmer



It is an improved product automatically for poultry lighting.

It simulates sunrise and sunset and helps animals adapt to the environment without being disturbed by sudden light or sudden darkness.

There are 14 programs available.

If the first program (ON) is selected, it becomes active. Closing and opening hours: if entered in hours and minutes; starts working according to the hours entered.

PLS-06

Automatic Lighting System

Incubation Equipments



INC-01 16 LEVELS
Dimensions:
 160 x 55.8 x h 203 cm
Capacity:
 32 Viol

INC-02 14 LEVELS
Dimensions:
 160 x 55.8 x h 203 cm
Capacity:
 28 Viol

INC-01 / INC-02

Setter Trolley



Dimensions:
 160 x 55.8 cm
Capacity:
 32 Baskets

INC-03

Hatcher Trolley



Dimensions: 59.5 x 39.5 x h 16.5 cm
Weight: 1.400 gr
Capacity: 82 Chicks

INC-04

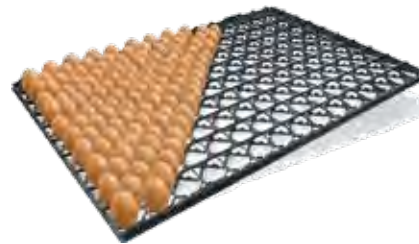
Setter Tray (82)



Bottom Pierced

INC-05

Big Chick Box 2 Compartment

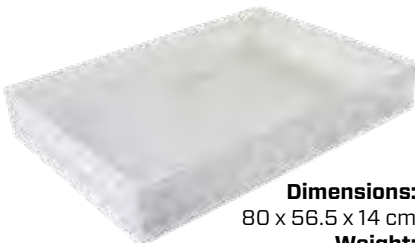


Dimensions:
 69.5 x 48.5 x 15 cm
Weight:
 1.950 gr
Capacity:
 100 chick

Dimensions:
 73.5 x 50.5 x 4 cm
Weight:
 1.100 gr
Capacity:
 150

INC-07

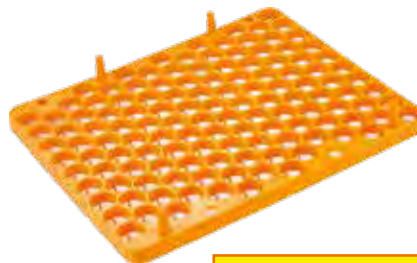
Chick Setter Tray



Dimensions:
 80 x 56.5 x 14 cm
Weight:
 2.580 gr
Capacity:
 150

INC-08

Chick Hatcher Tray

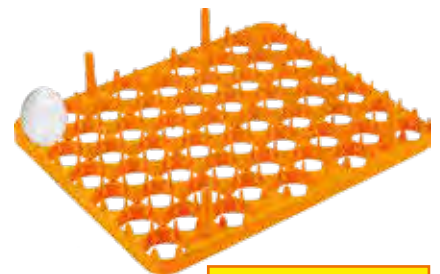


38 x 31 x 5 cm

129 Egg

INC-09

Quail and Partridge

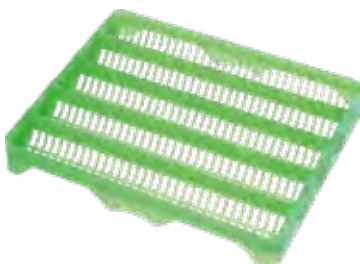


38 x 31 x 7.5 cm

54 Egg

INC-10

Setter Tray



38 x 31 cm

30 Egg

INC-11

Setter Tray



40 x 53 x 5.5 cm

80 Chicks

INC-12

Hatcher Basket



41 x 34 cm

35 Chicks

INC-13

Hatcher Basket

Heating Systems



- High heat and high efficiency.
- Stainless steel.
- Optimal heating system for the house environment.
- Possibility of manual or automatic control.
- It saves fuel because it reflects the temperature on the floor.
- There is no temperature difference in the house.
- Does not require electricity.
- Heater can be adjusted thermostatically or manually.
- Regular cleaning of the filter is recommended for perfect combustion.

CAPACITY	CONSUMPTION	WEIGHT	PRESSURE (MBAR)
500-5.000	36-360	1.5	20-1.400

SHS-01
Infrared Heater



- Dimension: ø 535 mm
- Capacity: 2.500 K/cal

SHS-02
Round Heater



Diesel Heaters

CAPACITY	CONSUMPTION M ³	HEAT SPACE M ²	DIMENSIONS	WEIGHT
50.000	5 m ³ /s	500 - 2.000	46 x 100 x 33 cm	32
80.000	8 m ³ /s	800 - 3.000	46 x 60 x 147 cm	55
100.000	10 m ³ /s	1.000 - 4.000	63 x 154 x 75 cm	68

Gas Heaters

CAPACITY	CONSUMPTION M ³	HEAT SPACE M ²	DIMENSIONS	WEIGHT
50.000	5 m ³ /s	400 - 2.500	35 x 42 x 100 cm	21
80.000	10.5 m ³ /s	1.000 - 3.000	59 x 52 x 120 cm	40
110.000	13.3 m ³ /s	1.500 - 5.000	69 x 58 x 148 cm	52

Dual Heaters (Naturel Gas - Diesel Heater)

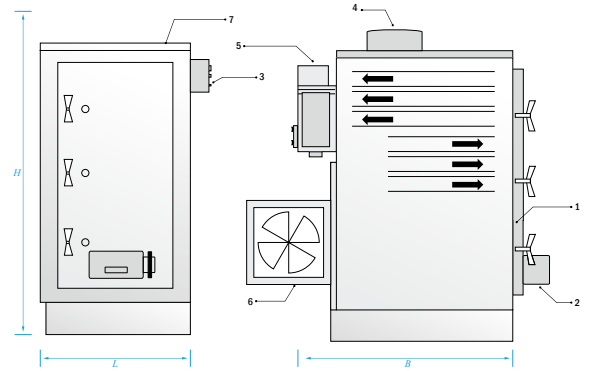
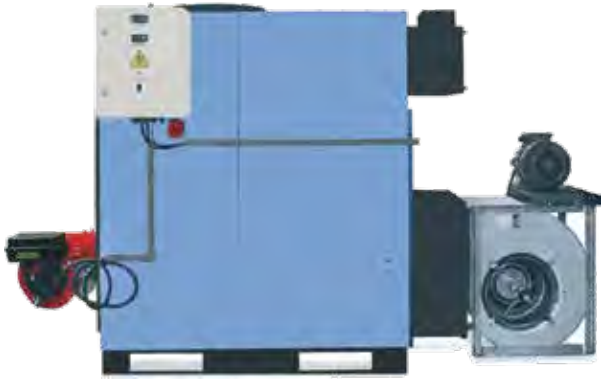
CAPACITY	CONSUMPTION M ³	HEAT SPACE M ²	DIMENSIONS	WEIGHT
100.000	10 lt/h - 12 m ³ /s	1.000 - 4.000	63 x 154 x 75 cm	71



Chicken Burner

TYPE	FEATURES	
50 kg Gas	Burning Hopper's Volume	0.282
100 kg Gas	Speed of Burn	50 kg at 30 mins
50 kg Diesel	Consumption	7-10 LPG at 30 mins
100 kg Diesel	Heat Range	850-1.100 degrees
35 kg Solid Fuel	Average Ashes	%3
	Thermostat Included	Yes
	Length	2.400 mm
	Width	900 mm
	Height	3.880 mm
	Weight	1.100 kg

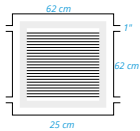
Heating Systems



- Ideal for heating large volume areas such as coops, greenhouses, factories, mosques, meeting halls, sport facilities and restaurants.
- Thanks to the 3-Pass system, smoke route extends and funnel temperatures decreases and fuel savings are obtained.
- Produces hot/dry air required in drying process in leather, dying, textile, grape drying, food and other similar industrie
- Uses only liquid fuel (fuel oil, natural gas, diesel fuel), easy and quick assembly with its electrical connection
- It is economic with low investment and operation costs and safe with burner having digital safety thermostat control.
- Mono block body is isolated with fiberglass, coated with electrostatic dust paint and protection against corrosion was obtained for iron plates.
- Air is regularly rendered into the ambiance with radial fan operating silently

SHS-06

Liquid Fuel and Natural Gas Hot Air Equipment



Equipments preferred as a high efficiency option in large places requiring heating and hot air circulation are offered for your use with SistemTav quality and customized production options.

TECHNICAL SPECIFICATIONS

SHS-07, SHS-07 M

FAN 230 W | 1420 RPM
4600 m³ / Air | 4.6 m³ Heating Surface

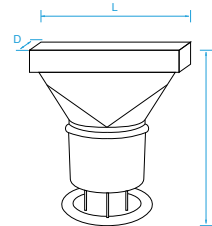
SHS-07 - D-80

80.000 Kcal/H • 7.100 m³
D: 810 mm • H: 1.040 mm • L: 810 mm

SHS-07 - D-100

100.000 Kcal/H • 10.100 m³
D: 1.050 mm • H: 1.040 mm • L: 940 mm

* The values might change in parallel with the product development.



SHS-07

Aparey

- Automatic adjustment of fuel supply speed
- Burning chamber is made of cast iron
- Chrome steel mixer has heat resistance up to 1200 C
- 90% thermal efficiency
- Turbo system



CAPACITY	MOTOR	FAN FLOW M3/H	AIR FLOW M3/H	CONSUMPTION COAL 5000 KCAL / KG
150.000	2.61	12.000	8.000	13.33 KG
200.000	3.31	12.000	12.000	17.18 KG
250.000	4.11	12.000	12.000	22.22 KG
300.000	5.11	18.000	13.500	26.67 KG
400.000	8.99	27.000	13.500	35.56 KG
500.000	8.99	40.000	26.650	44.44 KG
600.000	8.99	50.000	30.500	58.00 KG

Solid Fuel Heaters

Heat generator (air heater) solid fuel

Accessories



3.000 kg

SA-01

Heavy-duty Ceiling Winch



1.200 kg

SA-02

Manual Wall-Mounted Winder



1.200 kg

SA-03

Ceiling Winch



2.000 kg

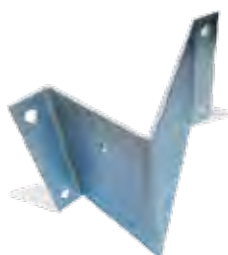
SA-04

Ceiling Winch



SA-05

Wire Stretching Apparatus



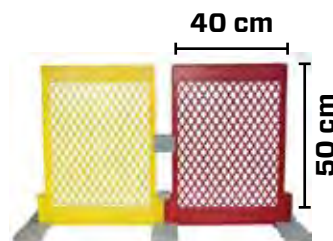
SA-06

Wall Winch Connecting Plate



SA-07

Pulley Hanging Plate



50 x 40 cm

SA-08

Chick Separator



50 mm

SA-09

Plastic Pulley



20 mm

SA-10

Plastic Pulley



80 mm

SA-11

Plastic Pulley



80 mm

SA-12

Steel Pulley



60 mm

SA-13

Steel Pulley



SA-14

Electronic Sensor



SA-15

Nipple Rope



Ø 8 mm

SA-16

Polypropylene Rope

Accessories



- 1,5 mm
- 2 mm
- 3 mm
- 4 mm
- 5 mm
- 6 mm
- 8 mm

Product Galvanized Aircraft Cable

SA-17

Steel Rope



5/16"

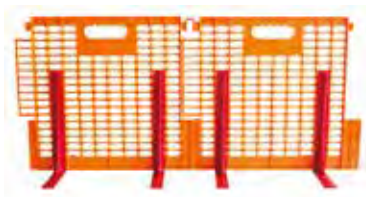
SA-18

Steel Rope Clamp



SA-19

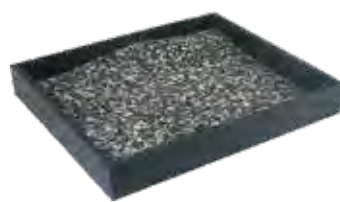
Plastic Rope Clamp



50 x 45 cm

SA-20

Chick Separator



60 x 34 x 8 cm

SA-21

Rubber Disinfection Tank



52 x 35 cm

SA-22

Plastic Disinfection Tank



51x51x8 cm

SA-23

Poultry Plastic Floor Grills



With Switch and Brake 0.55 kw

SLS-01

Feeding and Drinking Line Lifting System



With Switch and Brake 0.75 kw

SLS-02



50x50x6 cm

SA-24

Poultry Plastic Floor Grills



40x40x6 cm

SA-25

Poultry Plastic Floor Grills



40x40x6 cm

SA-26

Poultry Plastic Floor Grills

Life Chicken Transporting Coops



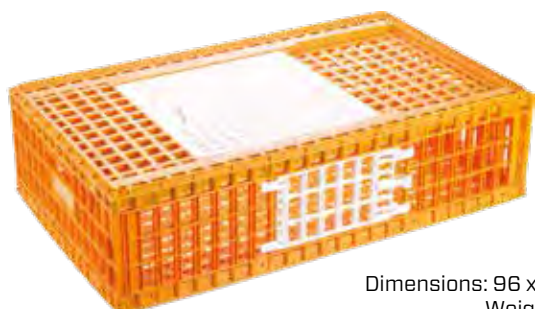
Dimensions: 96 x 57 x 27 cm
Weight: 6.600 gr
Capacity: 12-16 chicken

SLC-01
Open Top Coop



Dimensions: 96 x 57 x 27 cm
Weight: 8.300 gr
Capacity: 12-16 chicken

SLC-02
Open Top Coop



Dimensions: 96 x 57 x 27 cm
Weight: 7.500 gr
Capacity: 12-16 chicken

SLC-03
Top and Side Doors Coop



Dimensions: 96 x 57 x 27 cm
Weight: 7.500 gr
Capacity: 12-16 chicken

SLC-04
Top and Side Doors Coop



Dimensions: 96 x 57 x 27 cm
Weight: 6.600 gr
Capacity: 12-16 chicken

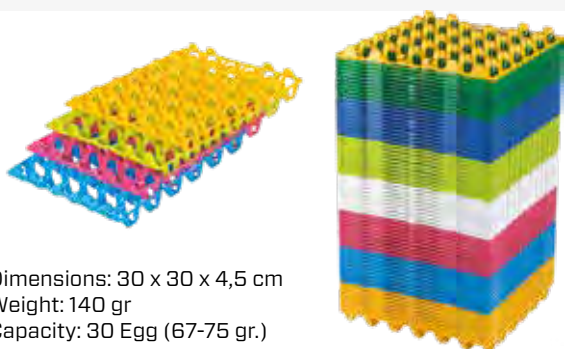
SLC-05
Open Top Coop



Dimensions: 96 x 57 x 27 cm
Weight: 6.600 gr
Capacity: 12-16 chicken

SLC-06
Open Top Coop

Egg Transport Equipment



Dimensions: 30 x 30 x 4,5 cm
Weight: 140 gr
Capacity: 30 Egg (67-75 gr.)

SLC-07
Plastic Egg Tray



Dimensions: 68 x 37 x 42 cm
Weight: 3.100 gr
Capacity:
With Shirink 14 Viol 420 Egg
Double Shirink 12 Viol 360 Egg
Without Shirink 8 Viol 240 Egg

SLC-08
Egg Crate

Meat Boxes



25 Kg

Dimensions: 60 x 40 x 26 cm

MLC-01

Meat Boxe (Bottom Pierced)



28 Kg

Dimensions: 55 x 37 x 32 cm

MLC-02

Meat Boxe



25 Kg

Dimensions: 54 x 36 x 32 cm

MLC-03

Meat Boxe (Bottom Pierced)



28 Kg

Dimensions: 50 x 40 x 33 cm

MLC-04

Meat Boxe (Bottom Pierced)



30 Kg

Dimensions: 60 x 40 x 33 cm

MLC-05

Meat Boxe (Bottom Pierced)



28 Kg

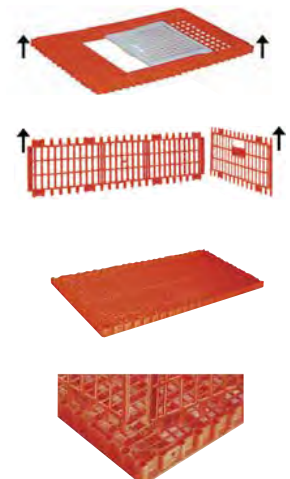
Dimensions: 66 x 41 x 38 cm

MLC-06

Meat Boxe

Characteristics

- The most important characteristic of the plastic chicken coops is having demountable parts.
- Thanks to the characteristic of the coops, you can change the broken or worn out parts.
- Since the coops are demountable, it ensures you to have an advantage for storage.
- You can mount the coops very easily.
- There is no need for additional equipments.
- When compared with the iron cages, this product has no problem of oxidation therefore it doesn't harm the chickens.
- Since the surface of the coops are smooth and rounded, they don't lead to corrosion, breaking and injuries during the transportation of the coops.
- The special design of the coops ensures maximum ventilation.
- Its excellent lock system prevents the slippage of the load.
- The coops can be used in very low temperatures.





SiSTEMTAV

Poultry Equipment Company

Address

Istasyon Mh. 1456 Sk. No:4/A
E5 Yani Gebze / Kocaeli, TR

Phones

+90 531 221 78 32
+90 531 221 71 22
+90 538 338 98 27

E-mail

info@sistemtav.com

 +90 531 221 78 32

 +90 531 221 78 32

     /Sistemtav



www.sistemtav.com